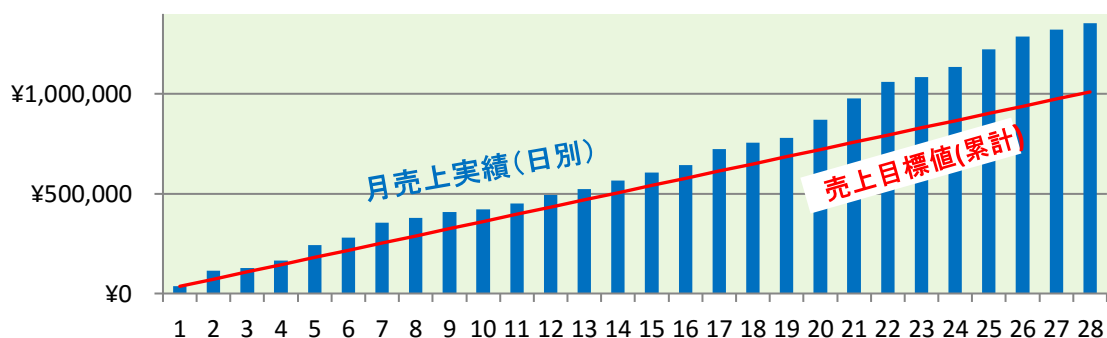
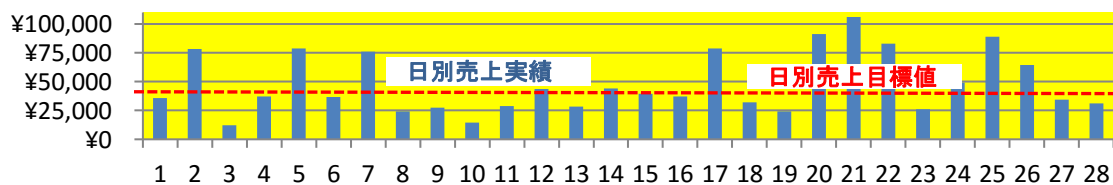


| 日付       | 天気  | 気温<br>℃ | 日照<br>時間 | 発電量<br>kWh | 売電金額<br>円 | 売電累計<br>円 | 売電目標<br>累計(円) | 達成率<br>% |
|----------|-----|---------|----------|------------|-----------|-----------|---------------|----------|
| 1        | 雪   | 2.3     | 0.40     | 831.0      | 35,904    | 35,904    | 36,040        | 99.6     |
| 2        | 晴&雪 | 2.6     | 2.30     | 1816.0     | 78,447    | 114,351   | 72,080        | 158.6    |
| 3        | 雪   | 3.5     | 0.40     | 281.0      | 12,148    | 126,499   | 108,120       | 117.0    |
| 4        | 曇   | 3.6     | 0.10     | 862.0      | 37,234    | 163,733   | 144,160       | 113.6    |
| 5        | 晴   | 6.7     | 5.40     | 1819.0     | 78,568    | 242,301   | 180,200       | 134.5    |
| 6        | 雪   | 5.7     | 2.90     | 851.0      | 36,750    | 279,051   | 216,240       | 129.0    |
| 7        | 晴   | 6.9     | 5.60     | 1761.0     | 76,071    | 355,122   | 252,280       | 140.8    |
| 8        | 曇   | 6.8     | 0.01     | 563.0      | 24,339    | 379,461   | 288,320       | 131.6    |
| 9        | 雪   | 0.8     | 1.20     | 640.0      | 27,652    | 407,113   | 324,360       | 125.5    |
| 10       | 雪   | 2.2     | 0.00     | 336.0      | 14,507    | 421,620   | 360,400       | 117.0    |
| 11       | 雪   | 4.6     | 0.40     | 669.0      | 28,909    | 450,529   | 396,440       | 113.6    |
| 12       | 雪   | 6.4     | 1.40     | 1010.0     | 43,615    | 494,144   | 432,480       | 114.3    |
| 13       | 雪   | 4.7     | 0.70     | 655.0      | 28,305    | 522,449   | 468,520       | 111.5    |
| 14       | 雪   | 3.9     | 1.10     | 1021.0     | 44,116    | 566,565   | 504,560       | 112.3    |
| 15       | 雪   | 3.9     | 1.80     | 914.0      | 39,493    | 606,058   | 540,600       | 112.1    |
| 16       | 晴   | 5.6     | 1.20     | 863.0      | 37,286    | 643,344   | 576,640       | 111.6    |
| 17       | 晴   | 8.5     | 5.60     | 1828.0     | 78,978    | 722,322   | 612,680       | 117.9    |
| 18       | 曇   | 7.3     | 0.30     | 738.0      | 31,895    | 754,217   | 648,720       | 116.3    |
| 19       | 曇   | 6.6     | 0.20     | 562.0      | 24,287    | 778,504   | 684,760       | 113.7    |
| 20       | 晴   | 7.1     | 7.00     | 2116.0     | 91,407    | 869,911   | 720,800       | 120.7    |
| 21       | 晴   | 8.4     | 7.30     | 2453.0     | 105,983   | 975,894   | 756,840       | 128.9    |
| 22       | 曇   | 13.0    | 5.00     | 1923.0     | 83,091    | 1,058,985 | 792,880       | 133.6    |
| 23       | 曇   | 10.4    | 0.40     | 601.0      | 25,980    | 1,084,882 | 828,920       | 130.9    |
| 24       | 曇&晴 | 8.2     | 3.20     | 1140.0     | 49,231    | 1,134,130 | 864,960       | 131.1    |
| 25       | 晴   | 6.5     | 7.00     | 2058.0     | 88,919    | 1,223,035 | 901,000       | 135.7    |
| 26       | 曇&晴 | 9.2     | 3.90     | 1491.0     | 64,411    | 1,287,446 | 937,040       | 137.4    |
| 27       | 曇   | 6.4     | 2.20     | 796.0      | 34,400    | 1,321,834 | 973,080       | 135.8    |
| 28       | 曇   | 6.4     | 0.70     | 721.0      | 31,156    | 1,352,981 | 1,009,120     | 134.1    |
| 月合計      |     |         | 67.71    | 31319.0    | 1,352,981 |           |               |          |
| 実績平均(/日) |     |         | 2.42     | 1118.5     | 48,321    |           |               |          |
| 月目標値(/日) |     |         | 2.42h    | 858.1      | 36,040    |           |               |          |



酒田松山1号 発電量計算 2015/2

|        |    |         |      |         |
|--------|----|---------|------|---------|
| 通知値    |    | 791,506 |      |         |
| 78e6ab | 1  | 792,337 | 831  | 35,904  |
| 792d9a | 2  | 794,153 | 1816 | 78,447  |
| 793896 | 3  | 794,434 | 281  | 12,148  |
| 795a41 | 4  | 795,296 | 862  | 37,234  |
| 79a14c | 5  | 797,115 | 1819 | 78,568  |
| 79c287 | 6  | 797,966 | 851  | 36,750  |
| 7a0750 | 7  | 799,726 | 1761 | 76,071  |
| 7a1d52 | 8  | 800,290 | 563  | 24,339  |
| 7a3653 | 9  | 800,930 | 640  | 27,652  |
| 7a4371 | 10 | 801,266 | 336  | 14,507  |
| 7a5d95 | 11 | 801,935 | 669  | 28,909  |
| 7a8505 | 12 | 802,945 | 1010 | 43,615  |
| 7a9e9d | 13 | 803,600 | 655  | 28,305  |
| 7ac681 | 14 | 804,621 | 1021 | 44,116  |
| 7aea37 | 15 | 805,535 | 914  | 39,493  |
| 7b0bee | 16 | 806,398 | 863  | 37,286  |
| 7b5358 | 17 | 808,226 | 1828 | 78,978  |
| 7b702f | 18 | 808,965 | 738  | 31,895  |
| 7b8625 | 19 | 809,527 | 562  | 24,287  |
| 7bd8cc | 20 | 811,643 | 2116 | 91,407  |
| 7c38a1 | 21 | 814,096 | 2453 | 105,983 |
| 7c83c3 | 22 | 816,020 | 1923 | 83,091  |
| 7c9b41 | 23 | 816,621 | 601  | 25,980  |
| 7cc7c5 | 24 | 817,761 | 1140 | 49,231  |
| 7d182c | 25 | 819,819 | 2058 | 88,919  |
| 7d526a | 26 | 821,310 | 1491 | 64,411  |
| 7d7185 | 27 | 822,106 | 796  | 34,400  |
| 7d8db1 | 28 | 822,827 | 721  | 31,156  |