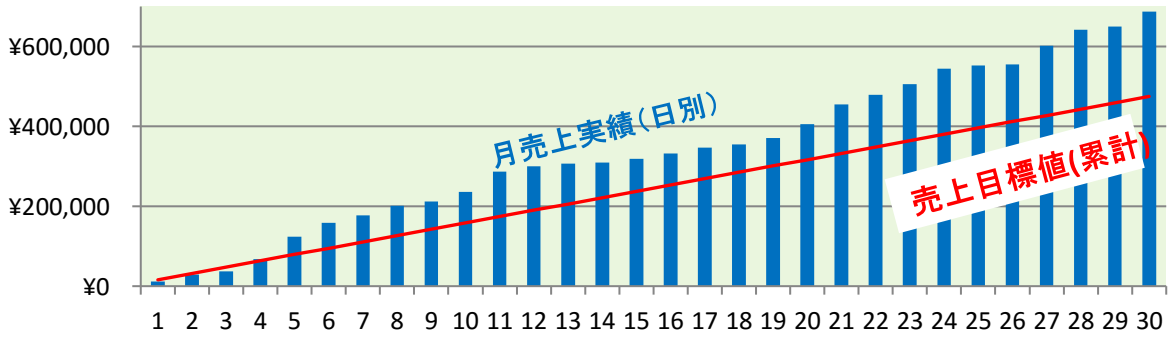
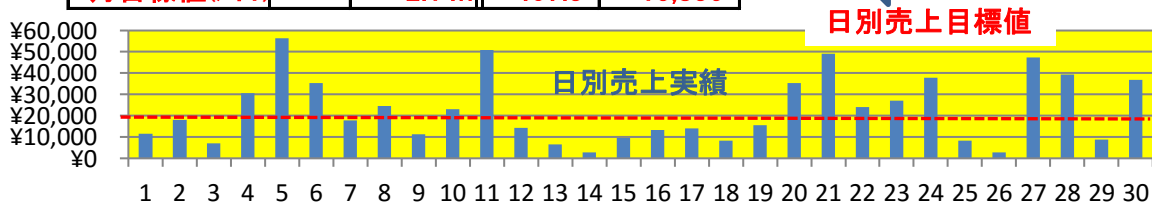


# 酒田広野1号 発電実績 2014年11月

日付	天気	気温 ℃	日照時間	発電量 kWh	売電金額 円	売電累計 円	売電目標累 計(円)	達成率 %
1	雨	19.8	0.10	295.0	11,470	11,470	15,836	72.4
2	雨	22.5	1.50	463.0	18,001	29,471	31,672	93.1
3	雨	14.9	0.10	182.0	7,076	36,547	47,508	76.9
4	曇&晴	14.3	4.40	789.0	30,676	67,224	63,344	106.1
5	晴	18.0	9.90	1447.0	56,259	123,483	79,180	156.0
6	晴	18.4	5.10	911.0	35,420	158,903	95,016	167.2
7	曇&晴	15.6	1.00	456.0	17,729	176,632	110,852	159.3
8	晴	13.7	3.90	629.0	24,456	201,087	126,688	158.7
9	雨	15.7	0.00	290.0	11,275	212,363	142,524	149.0
10	曇&晴	15.1	3.80	591.0	22,978	235,341	158,360	148.6
11	晴	15.9	9.10	1307.0	50,816	286,157	174,196	164.3
12	曇	17.2	1.50	365.0	14,191	300,348	190,032	158.1
13	嵐	13.8	0.20	171.0	6,648	306,996	205,868	149.1
14	曇&雨	8.2	0.00	73.0	2,838	309,835	221,704	139.8
15	曇&雨	8.3	0.50	245.0	9,526	319,360	237,540	134.4
16	曇	10.5	2.70	345.0	13,414	332,774	253,376	131.3
17	雨	11.4	0.80	360.0	13,997	346,771	269,212	128.8
18	曇&雨	10.1	0.50	215.0	8,359	355,130	285,048	124.6
19	曇	10.8	1.70	400.0	15,552	370,682	300,884	123.2
20	晴	11.7	7.10	906.0	35,225	405,907	316,720	128.2
21	晴	14.9	9.30	1263.0	49,105	455,013	332,556	136.8
22	曇&雨	17.5	4.80	622.0	24,183	479,196	348,392	137.5
23	曇&雨	12.4	4.90	694.0	26,983	506,179	364,228	139.0
24	曇	11.8	5.40	971.0	37,752	543,931	380,064	143.1
25	曇&雨	10.5	0.00	216.0	8,398	552,329	395,900	139.5
26	雨	9.2	0.00	73.0	2,838	555,168	411,736	134.8
27	晴	14.5	8.00	1216.0	47,278	602,446	427,572	140.9
28	晴	15.6	6.10	1010.0	39,269	641,714	443,408	144.7
29	雨	17.5	0.40	225.0	8,748	650,462	459,244	141.6
30	晴	16.0	5.30	949.0	36,897	687,360	475,080	144.7
月合計			98.10	17679.0	687,360			
実績平均(/日)			3.27	589.3	22,912			
月目標値(/日)			2.14h	407.3	15,836			



酒田広野1号 発電量計算 2014/11

	計測時累計値	当日メーター値	前日メーター値	発電量	
		75366	75366		
1	75675	14	75661	295	11,470
2	76196	72	76124	463	18,001
3	76331	25	76306	182	7,076
4	77296	201	77095	789	30,676
5	78717	175	78542	1447	56,259
6	79480	27	79453	911	35,420
7	79937	28	79909	456	17,729
8	80579	41	80538	629	24,456
9	80864	36	80828	290	11,275
10	81566	147	81419	591	22,978
11	82858	132	82726	1307	50,816
12	83101	10	83091	365	14,191
13	83265	3	83262	171	6,648
14	83355	20	83335	73	2,838
15	83609	29	83580	245	9,526
16	83955	30	83925	345	13,414
17	84289	4	84285	360	13,997
18	84559	59	84500	215	8,359
19	85004	104	84900	400	15,552
20	85923	117	85806	906	35,225
21	87117	48	87069	1263	49,105
22	87717	26	87691	622	24,183
23	88603	218	88385	694	26,983
24	89365	9	89356	971	37,752
25	89575	3	89572	216	8,398
26	89732	87	89645	73	2,838
27	90890	29	90861	1216	47,278
28	91871	0	91871	1010	39,269
29	92190	94	92096	225	8,748
30	93054	9	93045	949	36,897
			0	-93045	